

# Compact Telehandlers

Regulatory area: AU

P27.6







## Comfort: The best workplace



### Exclusive comfort

An unprecedented design guarantees maximum functionality and comfort; grouping the information provided to the driver and the controls of the various systems and devices for optimal ergonomics. The reverse shuttle on the steering wheel is also present on the joystick.

### Cab entry

To ensure simple and easy access to the cab, the door of Merlo telehandlers can be opened by up to 180°. In addition, the inside of the door is equipped with a large handrail to help the operator when getting inside and outside of the cab.

### Air-conditioning

Developed according to automotive standards, cutting the warm-up and cool-down times in half compared to a conventional air conditioning system. The inlet vent is placed on the side of the cab, away from potential sources of dust and dirt, while inside there are 8 vents.

## Efficiency: Simpler and smarter



### Transmission

In order to ensure a reduction in consumption and operating costs, Merlo telescopic handlers boast full electronic management of the transmission and engine, in order to minimise RPM and, consequently, fuel demand.

### Steering Modes

The axles ensure the maximum steering angle to perform manoeuvres in tight spaces. Additionally, the operator can manage the steering of the machine with three different options according to the specific needs of the job.

### Visibility

Merlo's improved visibility increases range of movement and safety for operators.

## Performance: Everything at your fingertips



### Transmission

The Merlo telehandlers have excellent braking capacity when the accelerator pedal is released, guaranteeing high torque to the wheels during material handling and transfers, as well as millimetric precision of movements when positioning the load.

### Engines

All models feature a combustion engine in an original Merlo mounting layout, developed by Merlo with the invention of the panoramic visibility models, ensuring maximum accessibility to components in case of programmed and/or extraordinary maintenance.

### Axles

The exclusively designed axles are manufactured and developed in-house by Merlo, and can be equipped with differential lock to ensure traction on any terrain, regardless of how unstable.

## Safety: Not just feelings



### Active safety

In order to remain fully compliant with regulations in frontal tipping prevention, Merlo handlers are equipped with features developed specifically to keep the operator safe from frontal tipping, without sacrificing performance, particularly of boom speed and lifting capacity.

### Aerial work platform

The Merlo telehandlers can be configured with aerial work platform. This solution, complying with EN280 standard, assures an increased level of active and passive safety during work at heights, and enhances machine versatility.






### Certified cab

All Merlo telehandlers have a metal structure above the glass roof on the outside of the cab to comply fully with FOPS Level II standard, the most stringent certification level in protecting the operator from falling objects.



<b>1 - 180° OPENING</b>	A door that made history! Merlo is the only manufacturer to offer a door with 180° split opening. Standard on the entire range.
<b>2 - COMPACTNESS</b>	Size matters! The absence of bulky counterweights, thanks to the studied balancing of the machine, makes Merlo models often the most compact in their category.
<b>3 - TAC-LOCK</b>	Manoeuvrability One of Merlo's development focuses is to minimise manoeuvring space while maximising the agility of machines. Merlo axles ensure maximum steering angle for manoeuvring in tight spaces. Additionally, the operator can manage the steering of the machine with three different options according to the specific needs of the job (front wheel steering, pivot steering and crab steering (for lateral movements)).
<b>4 - 360° VISIBILITY</b>	360° safety! Merlo telehandlers are designed to offer the best visibility on the market, thus maximising travel efficiency and safety for you and those around you.



PERFORMANCE AND FEATURES		P27.6EE4PLUS		
	<b>Performance</b>			
	Unladen weight (kg)	4850		
	Maximum load capacity (kg)	2700		
	Lift height (m)	5.9		
	Maximum reach (m)	3.3		
	Lift height at max. load capacity (m)	4.6		
	Reach at max. load capacity (m)	1.2		
	Load capacity at max. lift height (kg)	1800		
	Load capacity at max. reach (kg)	1000		
	Boom side-shift (mm)	—		
	Frame levelling (%)	—		
	Boom section	2		
	<b>Powertrain</b>			
	Engine	Kohler 2504 TCR		
	Range/Cylinders	2500/4		
	Engine power (kW/HP)	55,4/75,1		
	Anti-pollution technology	Tier 4 - DOC		
	Reversible Fan	—		
	Maximum speed (km/h)	40		
	Fuel tank capacity (l)	70		
	AdBlue tank capacity (l)	—		
	Hydrostatic transmission	Yes - 1V		
	EPD	—		
	Electronic joystick	—		
	Axles	Axles		
	Reducers	Epicyclic		
	Brakes	Dry discs		
	Automatic parking brake	Yes		
	<b>Hydraulic</b>			
	Hydraulic pump	Gear pump		
	Delivery / pressure (bar-l/min)	95-210		
	Hydraulic oil tank capacity (l)	70		
	Auxiliary hydraulic service on boom	Yes		
	Rear service line	○		
	<b>Cab</b>			
	Cab finishing	Standard		
	ASCS	—		
	FOPS II Cab	Yes		
	ROPS Cab	Yes		
	Controls	Electromechanical joystick control		
	Tilting cab	—		
	Reverse shuttle	Finger touch		
	<b>Configuration</b>			
	Hydropneumatic Suspension CS Merlo	—		
	Hydropneumatic Suspension BSS Merlo	○		
	Hydropneumatic Suspension EAS Merlo	—		
	Work lights on cab	○		
	Sun-shade in the cab	○		
	Tac-lock	Yes		
	Pre-arrangement for aerial work platform	○		
	Two floating forks	Yes		
	Pedal Inching-Control	Yes		
	Permanent four-wheel drive	Yes		
	All wheel steering	Yes		
	Three steering way	Yes		
	Standard tyres	12-16.5		
	OPT tyres	12/75-18; 300/80-15.3		
	Hydraulically controlled stabilizers	—		
	Turret rotation	—		
	Tractor type approval	—		
	Pneumatic brakes (ton)	—		
	Hydraulic brakes (ton)	—		

- not available
- standard
- optional

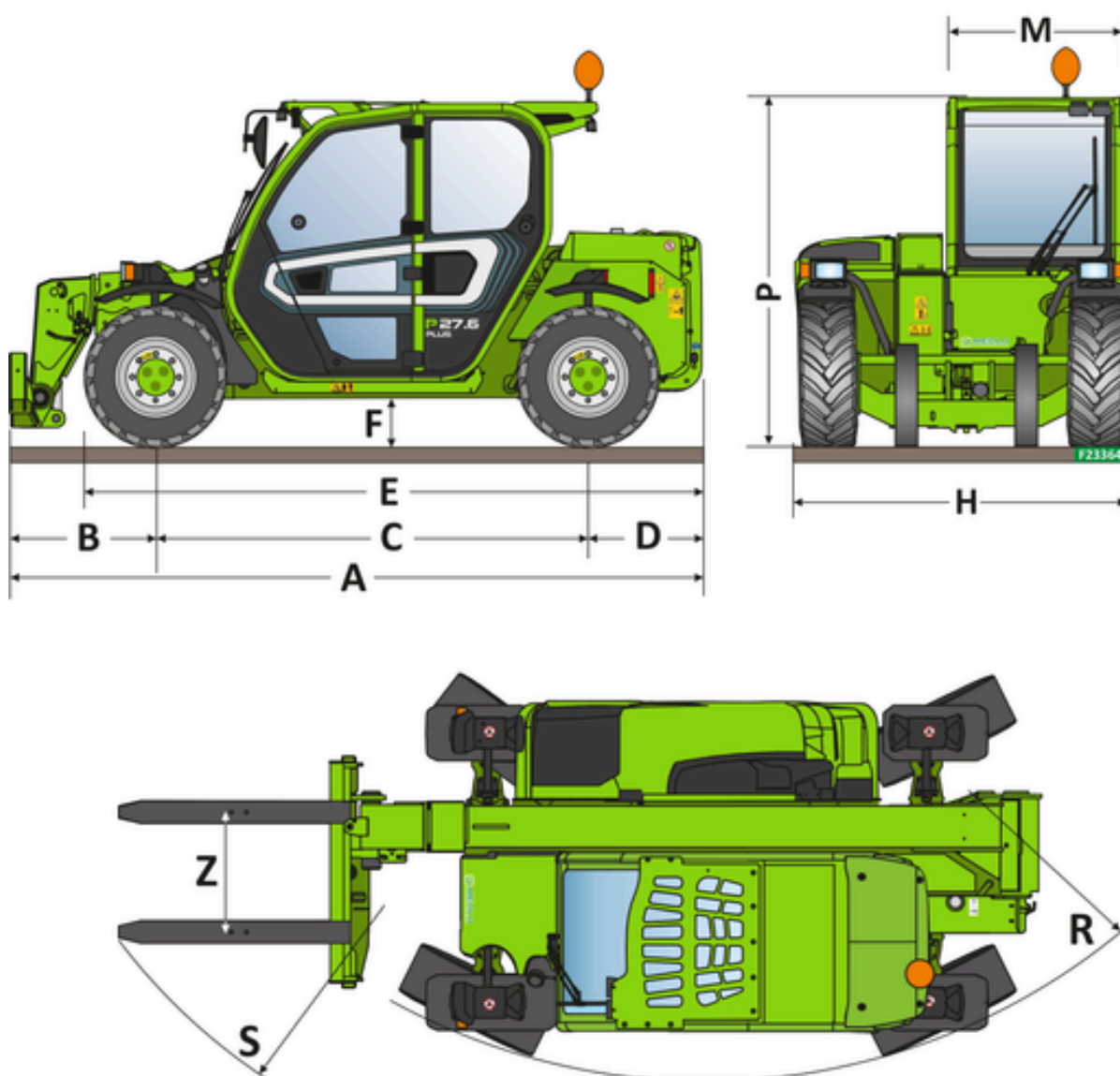
## Dimensions



### P27.6EE4PLUS

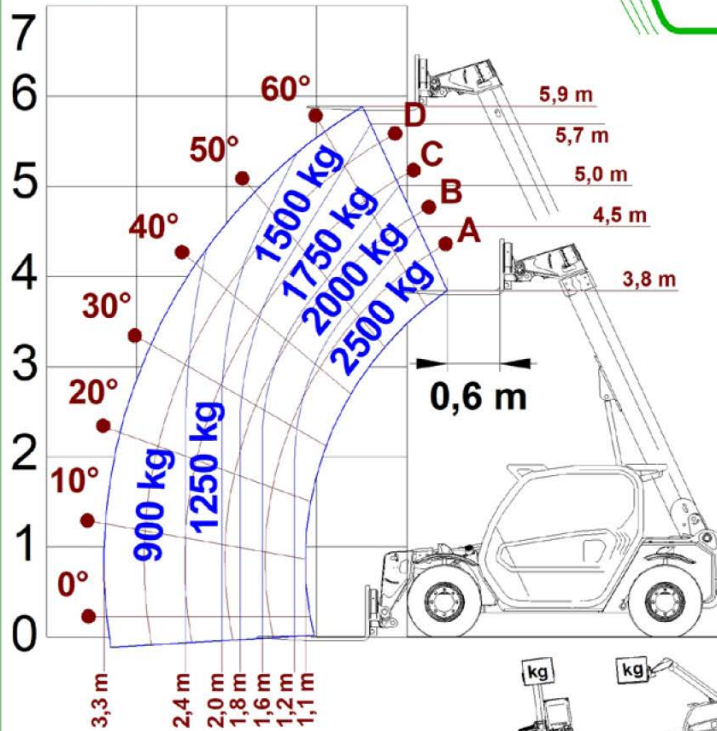
A - Length	3910
C - Wheelbase	2450
F - Ground clearance	270
H - Width	1860
M - Cabin width	1010
P - Height	1960
R - Turning radius at wheels	3370
S - Turning radius at forks	4200

## Technical Details



[m] 3 2 1 0

P27.6

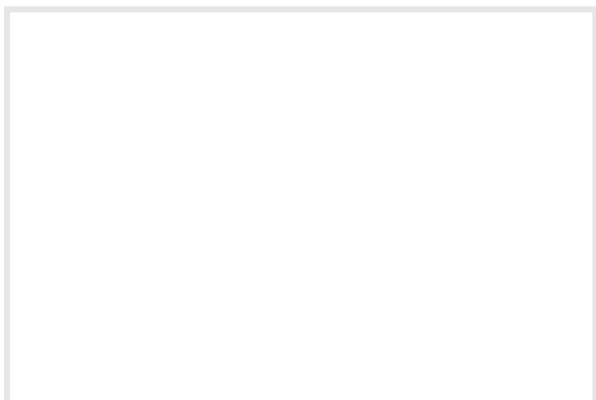


AS 10896.1 + ISO 22915-14



124651

### **Your Merlo dealer**



### **MERLO S.P.A.**

Via Nazionale, 9  
12010 S. Defendente di Cervasca,  
(Cuneo) Italia  
Tel. +39 0171 614111

**[info@merlo.com](mailto:info@merlo.com)**  
**[www.merlo.com](http://www.merlo.com)**

